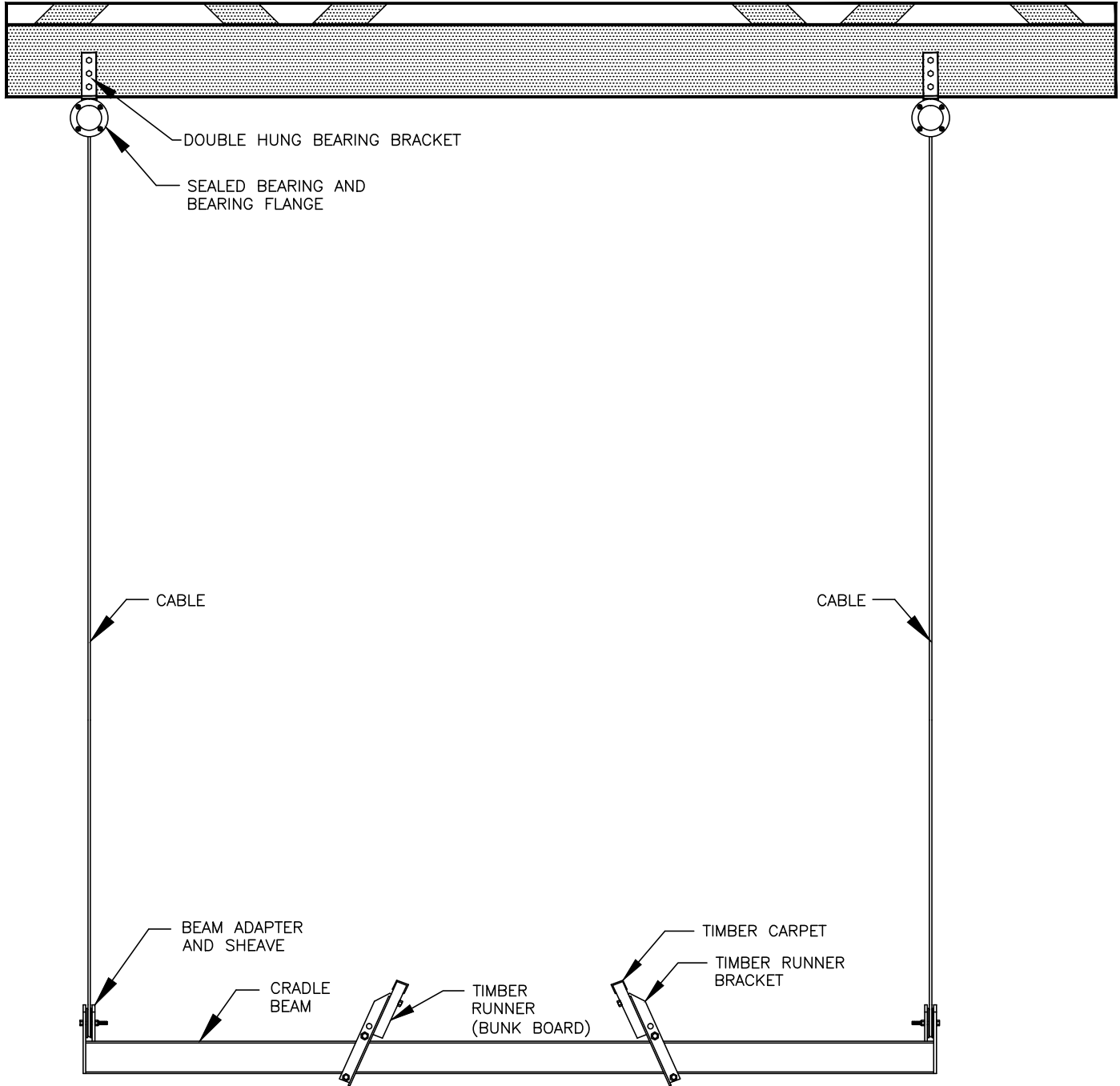


**"BOATHOUSE" MODEL LIFT: 8,000 LB
PARTS LIST**

NO.	ITEM DESCRIPTION	QTY
1	3/4 HP MOTOR WITH LONG CORD 15' AND BOXED SWITCH	2
2	GEAR PLATE	2
3	HINGED COVER	2
4	OVERHEAD MOTOR ANCHOR BRACKET	2
5	DOUBLE HUNG BEARING BRACKETS	4
6	BEARING FLANGES	8
7	SA 210 BEARINGS WITH BEARING LOCKS	8
8	SPACER SLEEVE	2
9	10" PULLEY	2
10	4L360 BELT	2
11	1/2" BORE PLAIN SHEAVES	4
12	7/16" SHACKLES	4
13	SNATCH BLOCKS (SLING LIFT ONLY)	4
14	DEAD END BRACKETS	4
15	1/4" x 30' CABLES WITH NICO AND THIMBLE	4
16	5" CRADLE BEAMS (CRADLE LIFT ONLY)	2
17	ROLLS 14' CARPET (CRADLE LIFT ONLY)	2
35	TIMBER RUNNER BRACKET	8
18	3/8" x 2 1/2" GALVANIZED CARRAIGE BOLTS (CRADLE LIFT ONLY)	8
19	3/8" GALVANIZED NUTS (CRADLE LIFT ONLY)	8
20	14' WEIGHTED SLINGS (SLING LIFT ONLY--NOT SHOWN)	2
HARDWARE		
21	1/2" x 1" GALVANIZED CARRAIGE BOLTS	32
22	1/2" x 1 1/2" GALVANIZED BOLTS	4
23	1/2" x 2" GALVANIZED BOLTS	4
24	1/2" GALVANIZED NUTS	40
25	1/2" GALVANIZED LOCK WASHERS	4
26	1/2" GALVANIZED FLAT WASHERS	20
27	3/16" WIRE CLIPS	4
28	5/8" x 3" GALVANIZED BOLTS (SLING LIFT ONLY)	4
29	5/8" x 6" GALVANIZED BOLTS	20
30	5/8" GALVANIZED NUTS	28
31	STAINLESS STEEL HARDWARE COVERPAK	2
32	1/2" x 3" STAINLESS STEEL BOLTS	4
33	1/2" STAINLESS STEEL LOCK NUTS	4
34	5/8" GALVANIZED WASHERS	28
36	1/2" x 5 1/2" GALVANIZED HEX BOLTS	8

GENERAL NOTES:

⚠ IMPORTANT—JOIST SHOULD BE ADEQUATE TO SUPPORT THE LOAD, WE RECOMMEND 2 x 10' DIMENSIONAL LUMBER. DEAD END BRACKETS SHOULD BE SECURELY ATTACHED TO THE BOATHOUSE FRAMING.



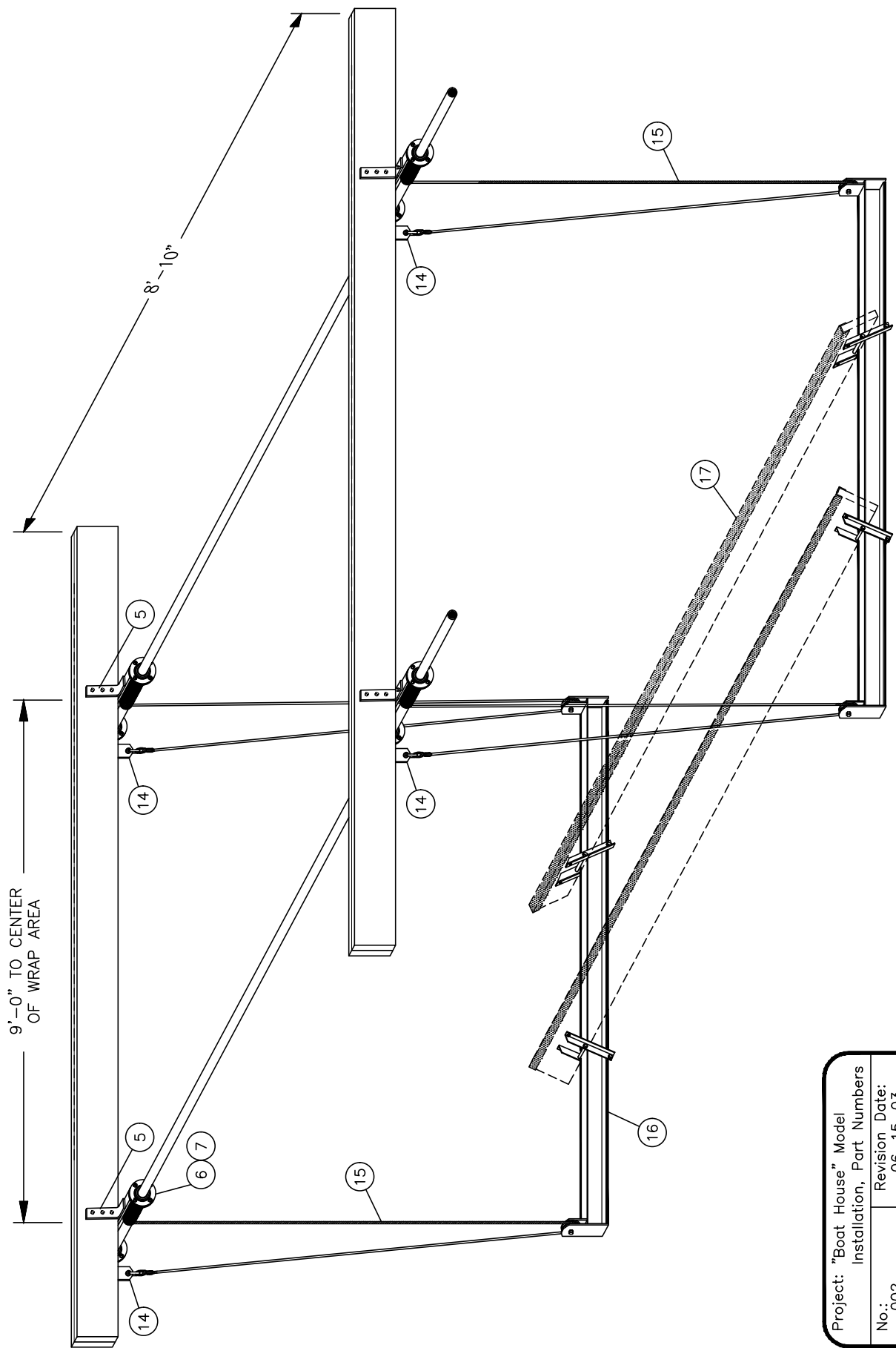
MODEL 8,000 LB LIFT

Project: "Boat House" Part Names (Model 8,000)		
No.: 001	Revision Date: 06-15-03	
Scale: None	Date: 08-07-01	Sheet: 1 of 1

BOAT LIFTS UNLIMITED, INC.

GENERAL NOTES:

1. FOR LIST OF MATERIALS RELATED TO PART NUMBERS, SEE PARTS LIST.

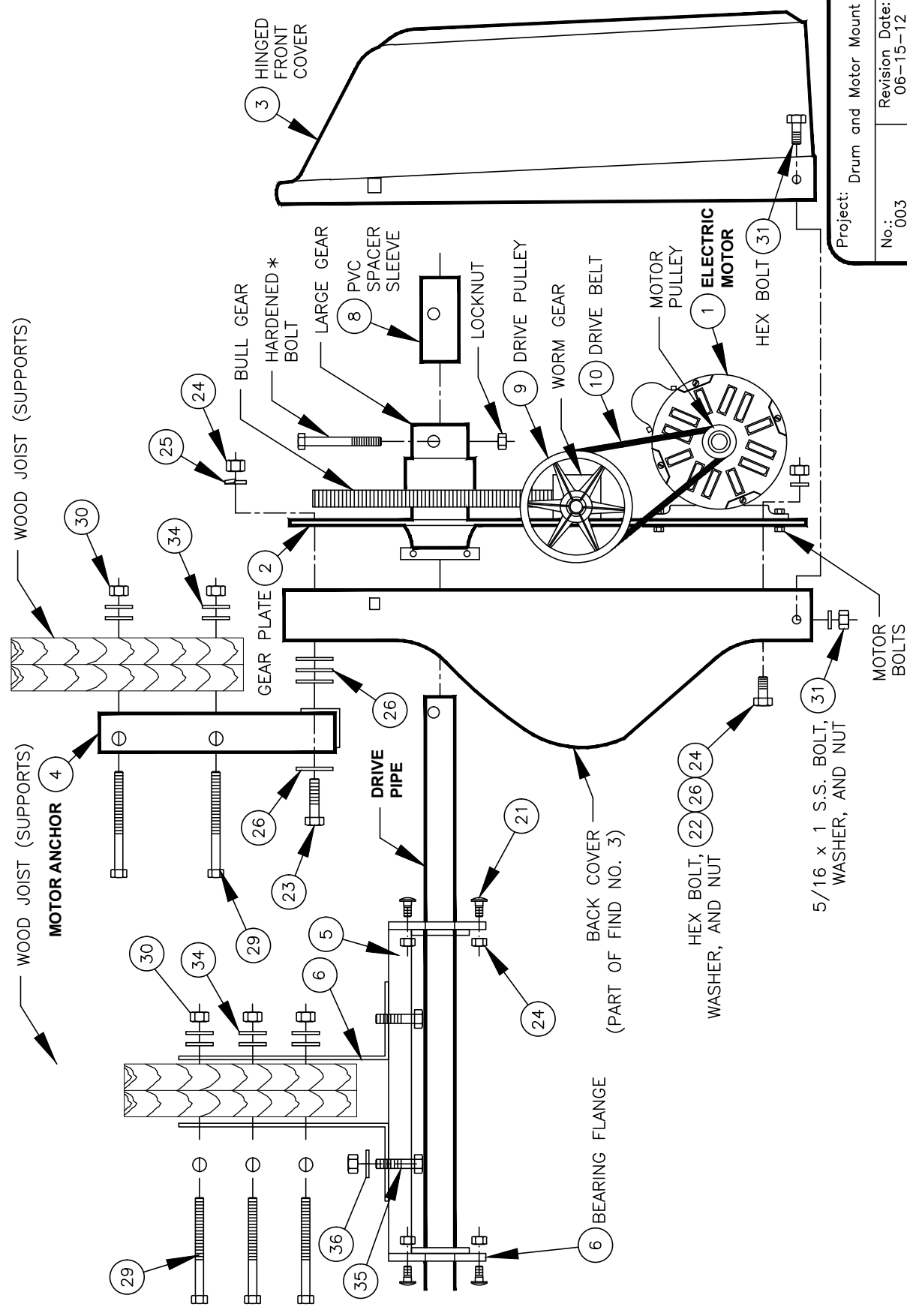


Project: "Boat House" Model Installation, Part Numbers			
No.: 002	Revision Date: 06-15-03	Date: 08-08-01	Sheet: 1 of 1
Scale: None			

BOAT LIFTS UNLIMITED, INC.

GENERAL NOTES:

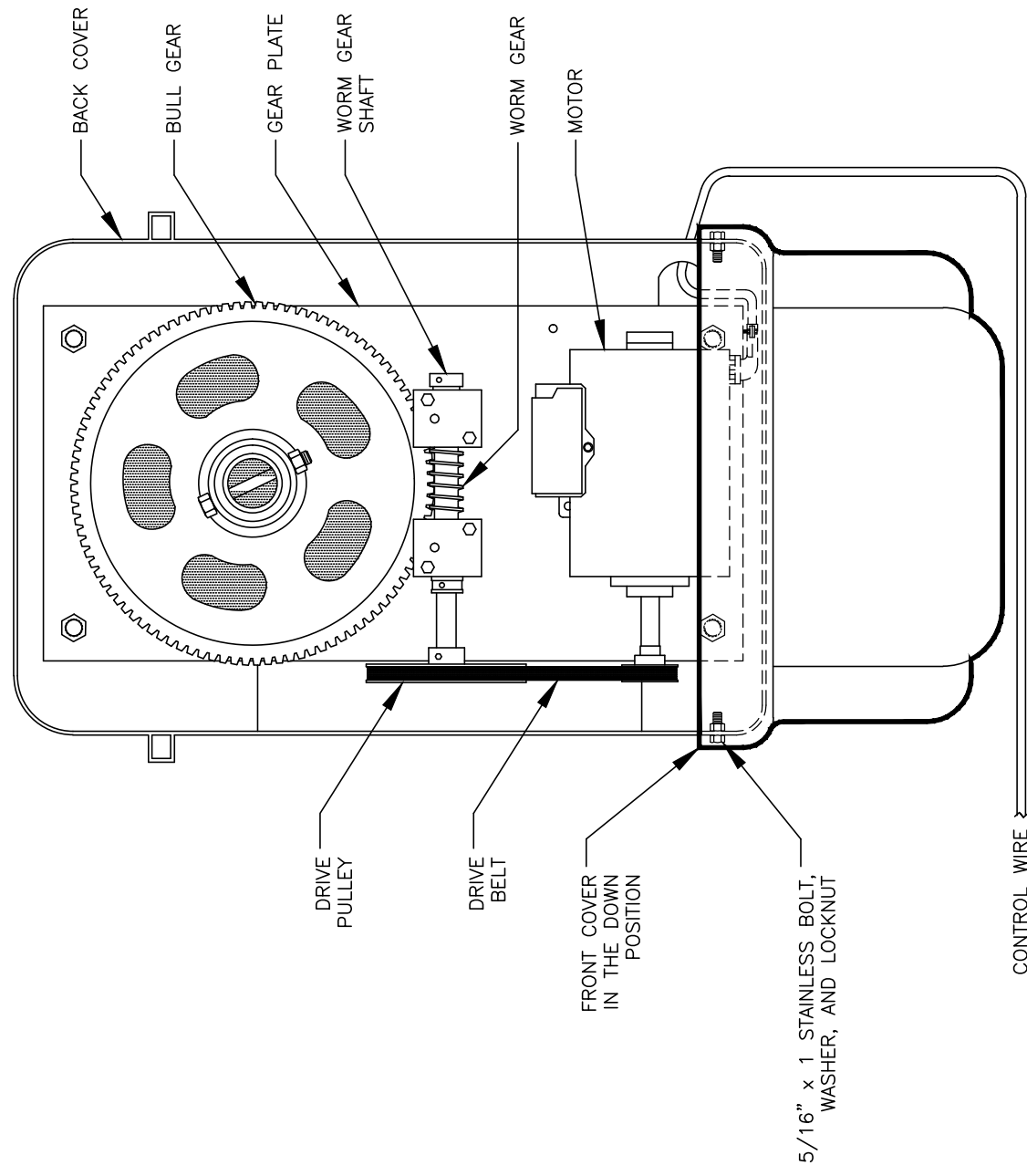
1. * CAUTION: INSTALL ONLY THE HARDENED BOLT SUPPLIED WITH THE GEAR ASSEMBLY.
2. ** USE BEARING LOCKS ON ALL BEARINGS TO PREVENT THE DRIVE PIPE FROM WALKING.
3. FOR LIST OF MATERIALS RELATED TO PART NUMBERS, SEE PARTS LIST.



Project: Drum and Motor Mount	
No.: 003	Revision Date: 06-15-12
Scale: None	Date: 06-04-12
	Sheet: 1 of 1

GENERAL NOTES:

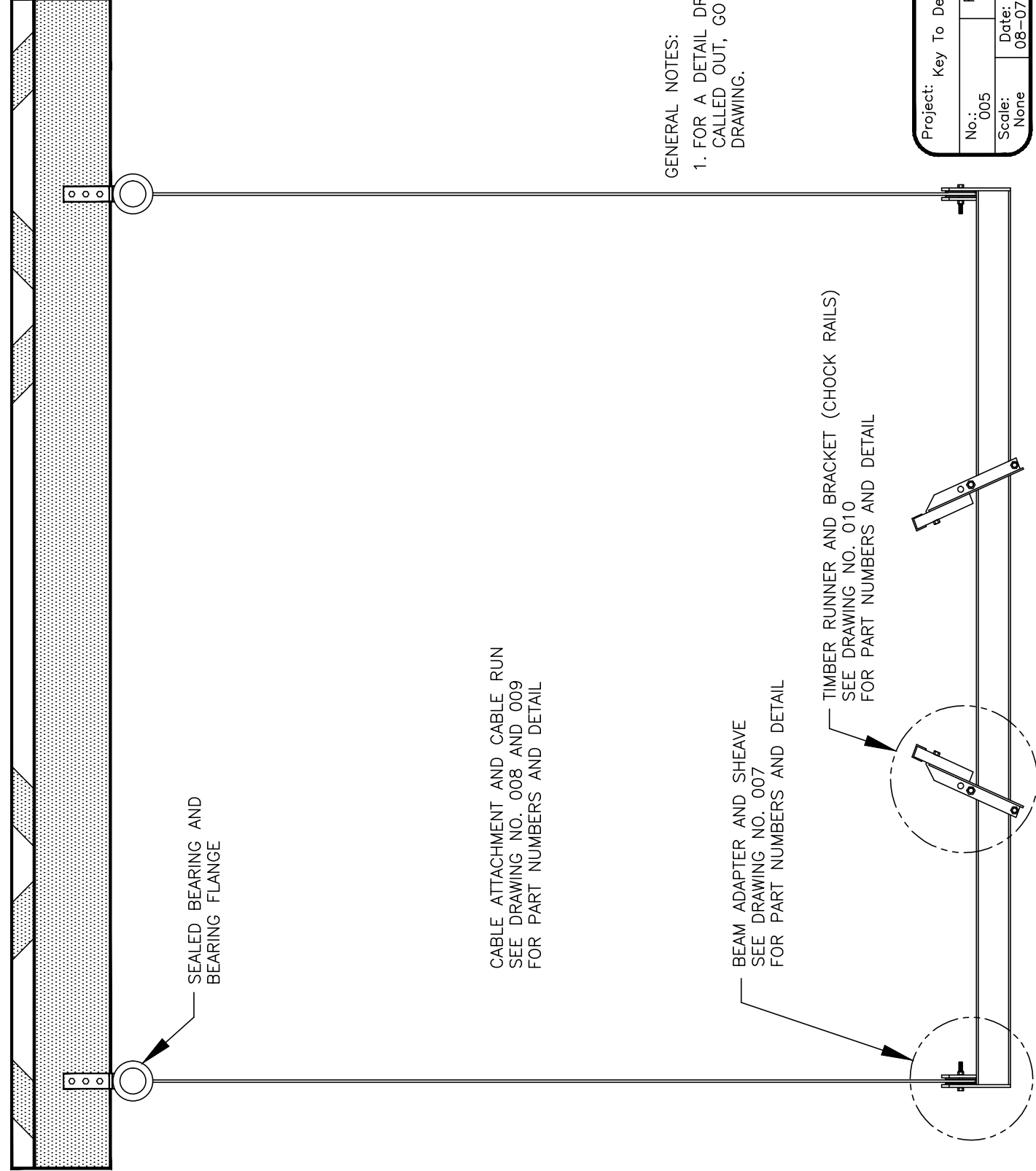
1. SEE DRAWING NO. 003 (DRUM AND MOTER MOUNT) FOR A SIDE VIEW OF MOTOR AND MOTOR HOUSING.



MOTOR HOUSING - FRONT VIEW

(COVER DOWN)

Project: Motor and Motor Housing			
No.:	004	Revision Date:	
Scale:	None	Date:	08-03-01
		Sheet:	1 of 1



SEALED BEARING AND BEARING FLANGE

CABLE ATTACHMENT AND CABLE RUN
SEE DRAWING NO. 008 AND 009
FOR PART NUMBERS AND DETAIL

BEAM ADAPTER AND SHEAVE
SEE DRAWING NO. 007
FOR PART NUMBERS AND DETAIL

TIMBER RUNNER AND BRACKET (CHOCK RAILS)
SEE DRAWING NO. 010
FOR PART NUMBERS AND DETAIL

GENERAL NOTES:

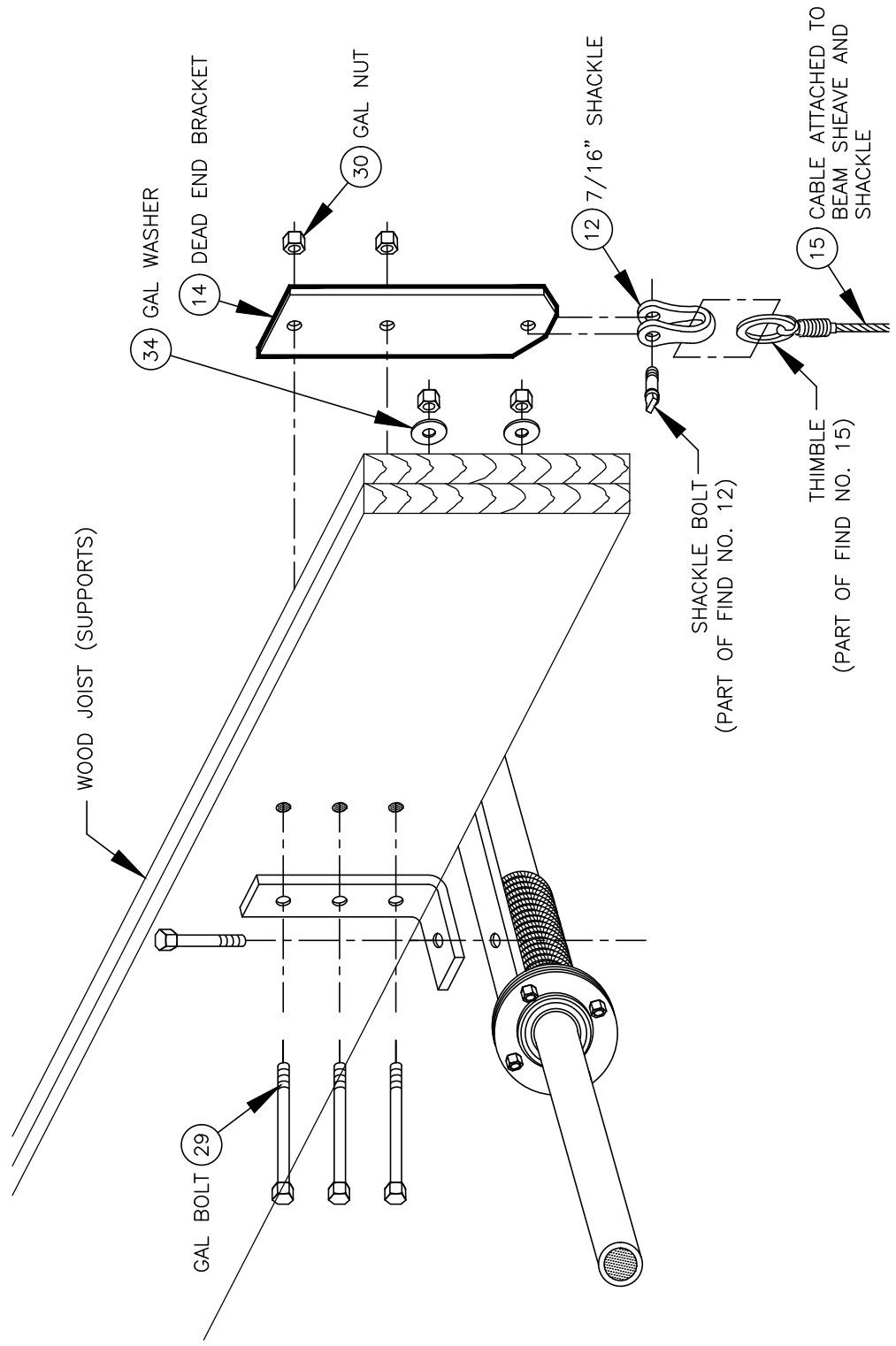
1. FOR A DETAIL DRAWING OF VIEW CALLED OUT, GO TO SPECIFIED DRAWING.

Project: Key To Detail Drawings			
No.: 005	Revision Date: 06-15-03		
Scale: None	Date: 08-07-01	Sheet: 1	of 1

BOAT LIFTS UNLIMITED, INC.

GENERAL NOTES:

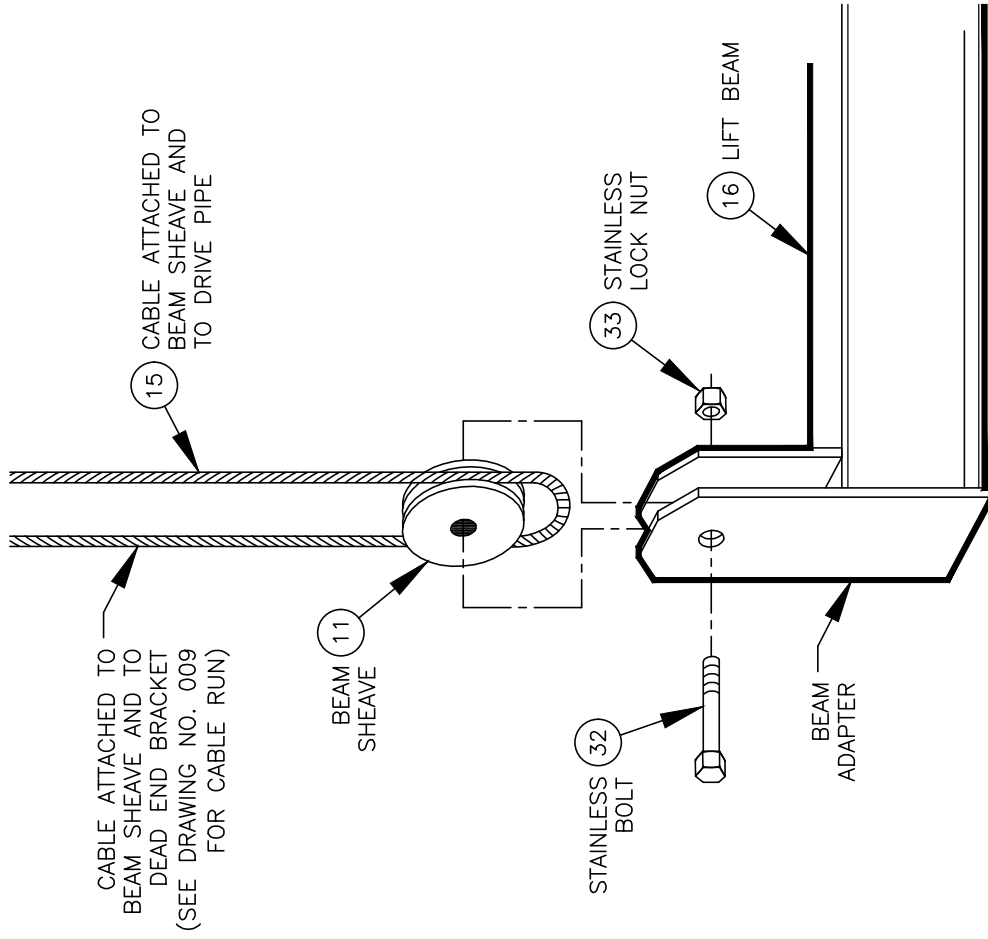
1. FOR LIST OF MATERIALS RELATED TO PART NUMBERS, SEE PARTS LIST.



Project: Drive Pipe Anchor and Dead End Bracket Detail	
No.: 006	Revision Date:
Scale: None	Date: 08-06-01
Sheet: 1	of 1

GENERAL NOTES:

1. FOR LIST OF MATERIALS RELATED TO PART NUMBERS, SEE PARTS LIST.

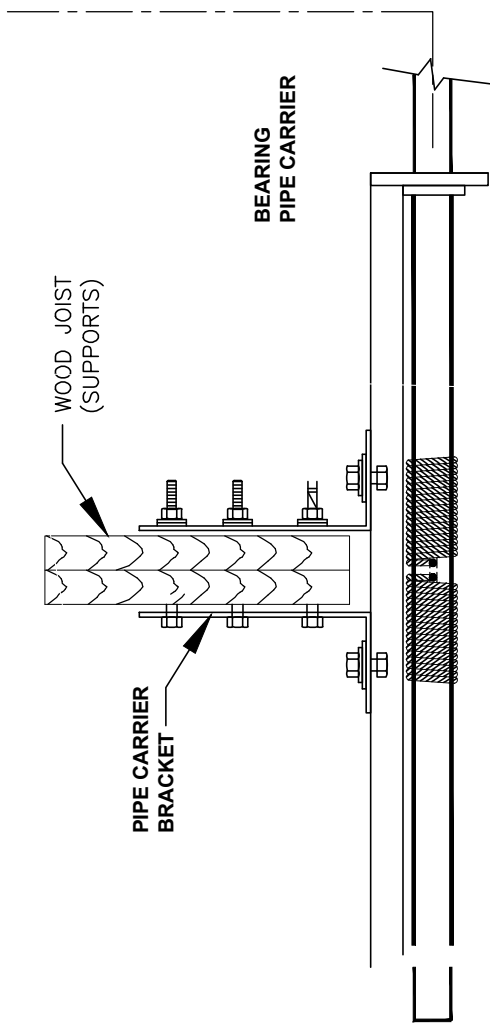
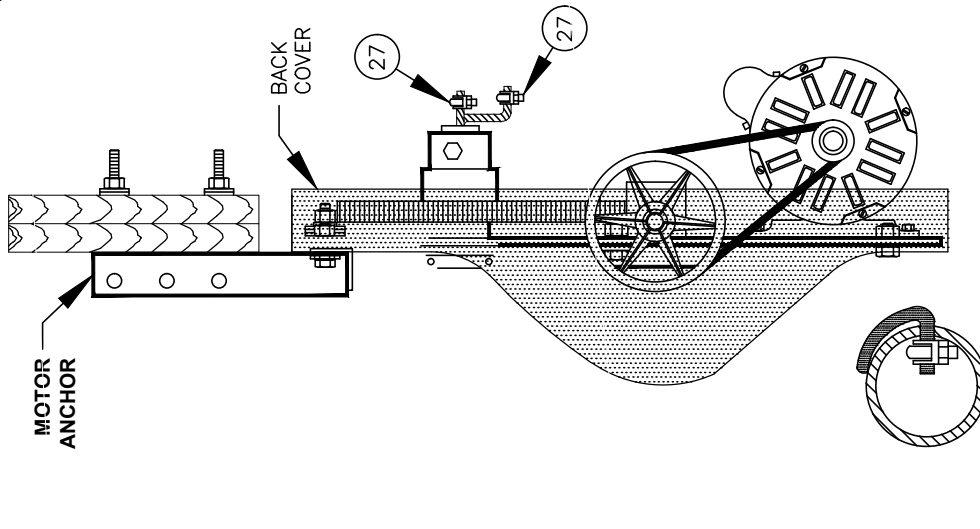


MODEL 8,000

Project: Beam Adapter and Sheave Detail	
No.: 007	Revision Date:
Scale: None	Date: 08-03-01
Sheet: 1 of 1	

GENERAL NOTES:

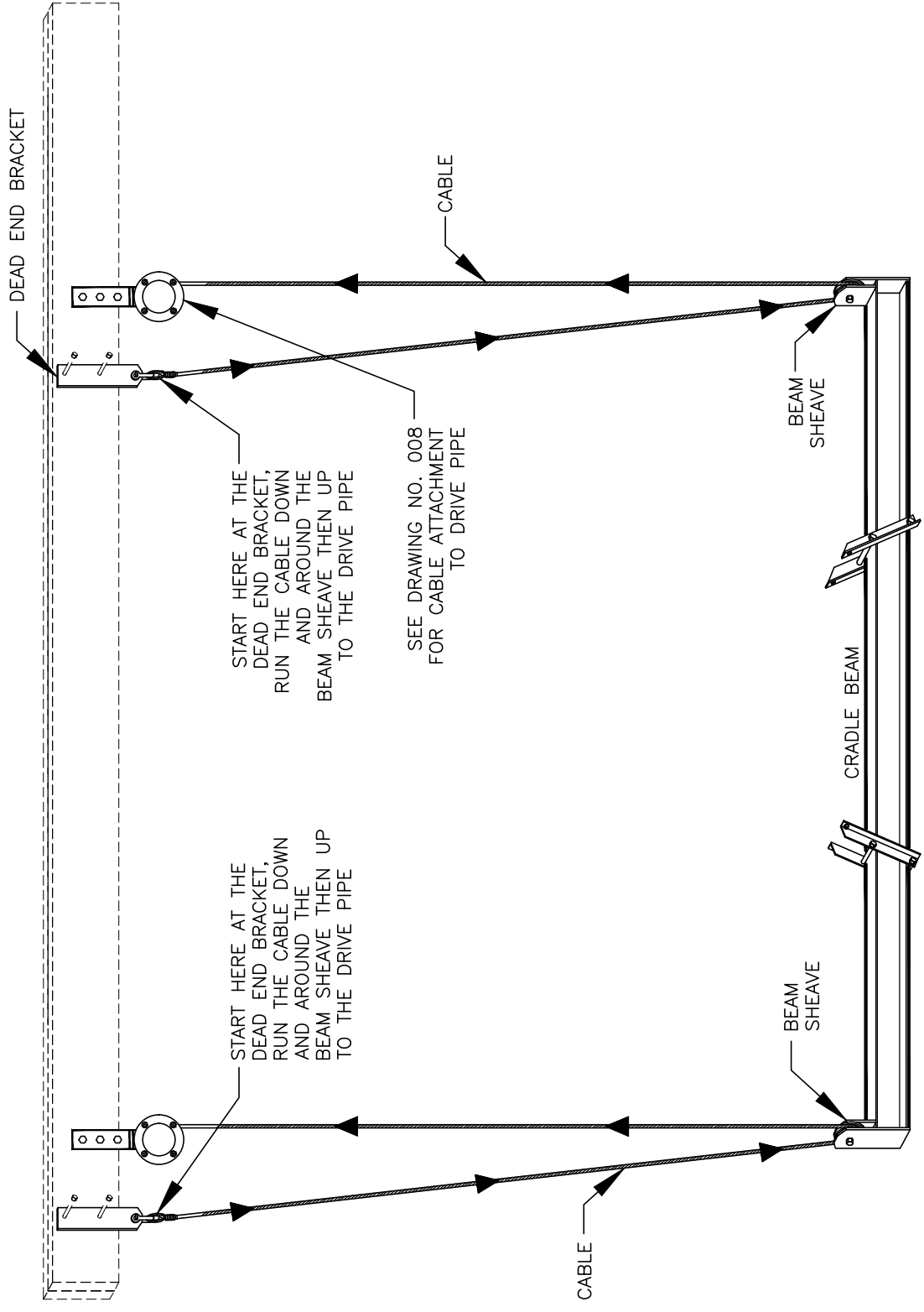
1. FOR LIST OF MATERIALS RELATED TO PART NUMBERS, SEE PARTS LIST.



Project: Cable Connections Assembly Detail and Cable Attachment			
No.:	008	Revision Date:	06-15-12
Scale:	None	Date:	06-04-12
		Sheet:	1 of 1

GENERAL NOTES:

- 1. ENOUGH CABLE IS SUPPLIED WITH THE LIFT TO LOWER THE CRADLE BEAM 15' BELOW THE DRIVE PIPE. IF A GREATER AMOUNT OF DROP IS REQUIRED, CALL YOUR LIFT SUPPLIER TO ACQUIRE LONGER CABLES.



START HERE AT THE DEAD END BRACKET, RUN THE CABLE DOWN AND AROUND THE BEAM SHEAVE THEN UP TO THE DRIVE PIPE

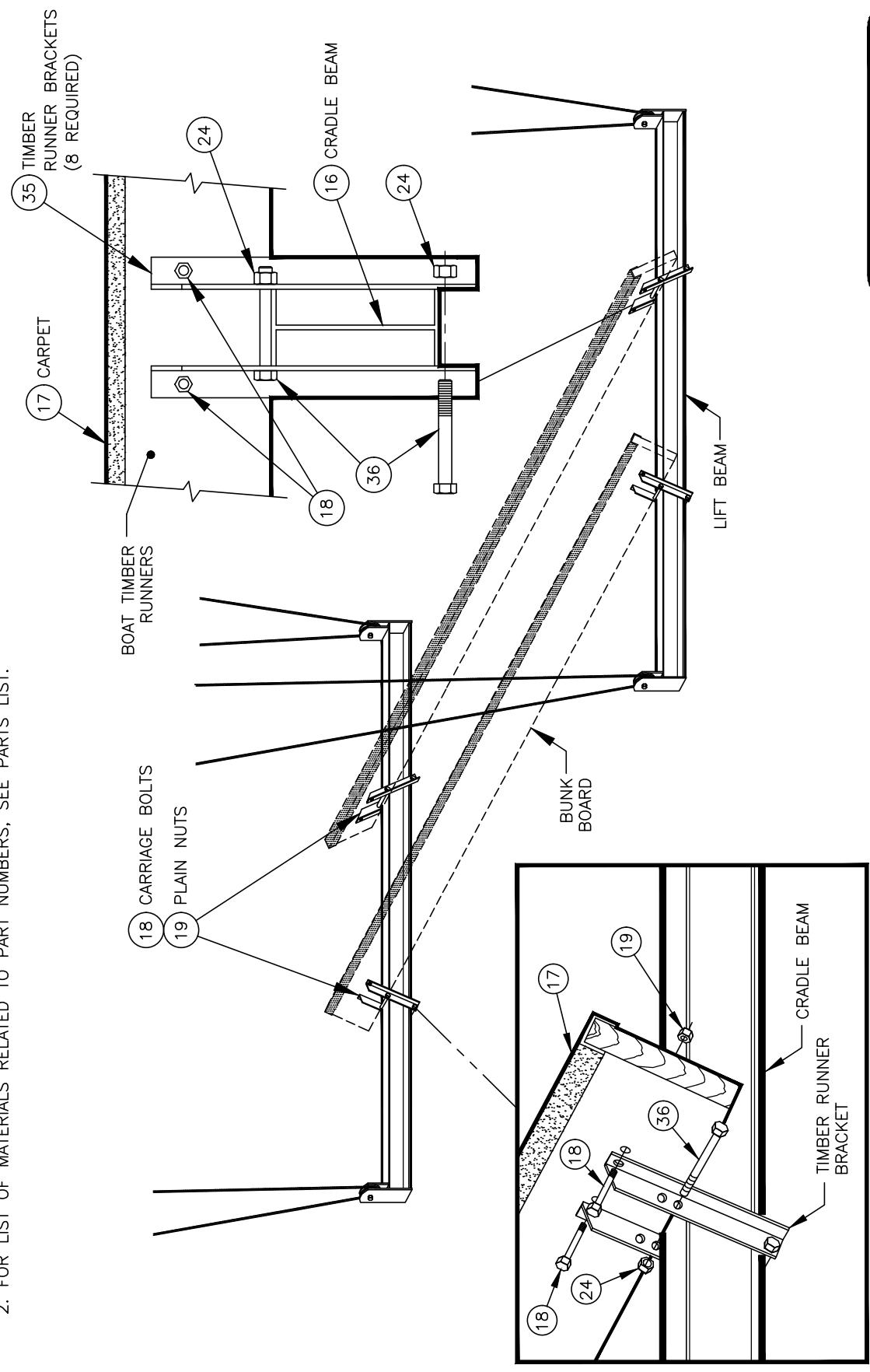
START HERE AT THE DEAD END BRACKET, RUN THE CABLE DOWN AND AROUND THE BEAM SHEAVE THEN UP TO THE DRIVE PIPE

SEE DRAWING NO. 008 FOR CABLE ATTACHMENT TO DRIVE PIPE

Project: "Boathouse" Model	
Cable Run Detail	
No.: 009	Revision Date: 06-15-03
Scale: None	Date: 08-09-01 Sheet: 1 of 1

GENERAL NOTES:

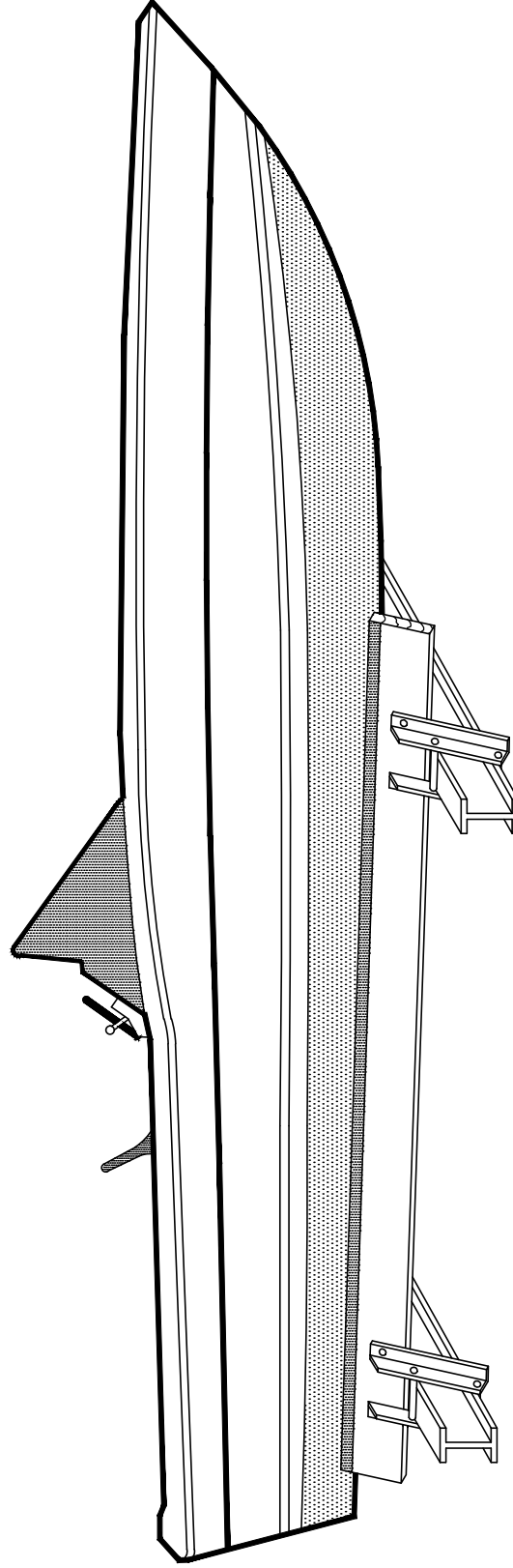
1. BUNK BOARDS, IF NOT SUPPLIED, SHOULD BE 2" x 8" OR 2" x 10" DIMENSIONAL LUMBER.
2. FOR LIST OF MATERIALS RELATED TO PART NUMBERS, SEE PARTS LIST.



Project: Chock Rails	
Assembly Detail	
No: 010	Revision Date: 06-15-03
Scale: None	Date: 07-19-01
Sheet: 1 of 1	

GENERAL NOTES:

1. FOR OPTIMUM PERFORMANCE, EQUAL WEIGHT DISTRIBUTION IS REQUIRED OVER BOTH CRADLE ARMS.
2. TO OBTAIN EQUAL WEIGHT DISTRIBUTION:
 - A. USE BALANCE POINT OF BOAT.
 - B. DO NOT USE CENTER OF BOAT LENGTH.



SIDE VIEW OF BOAT

Project: Instructions For	
Weight Distribution	
No.: 011	Revision Date: 06-15-03
Scale: None	Date: 08-03-01
	Sheet: 1 of 1